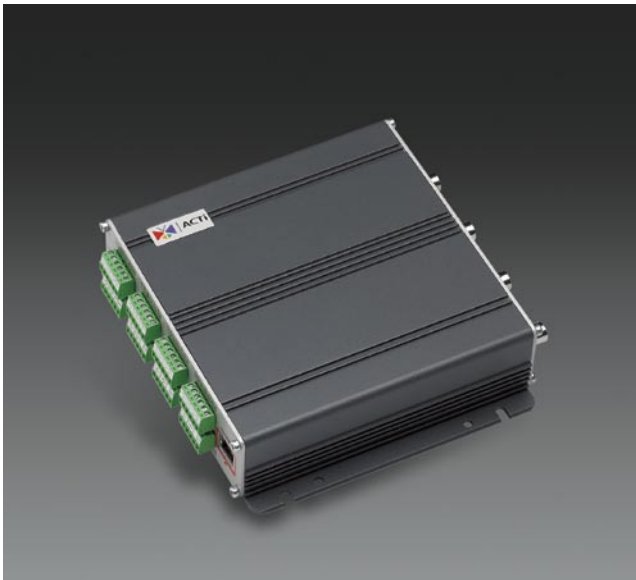


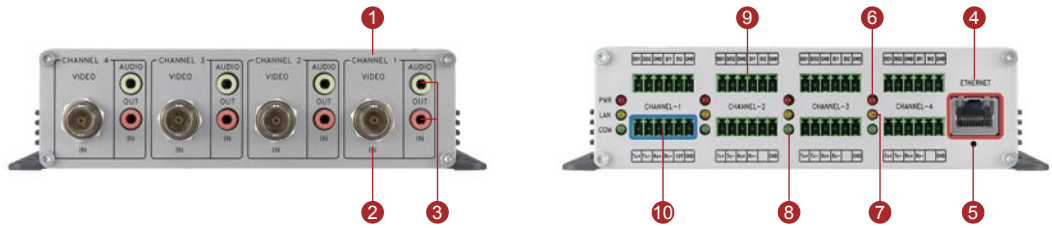


Four-channel Video Server with Two Way Audio

# ACD-2200

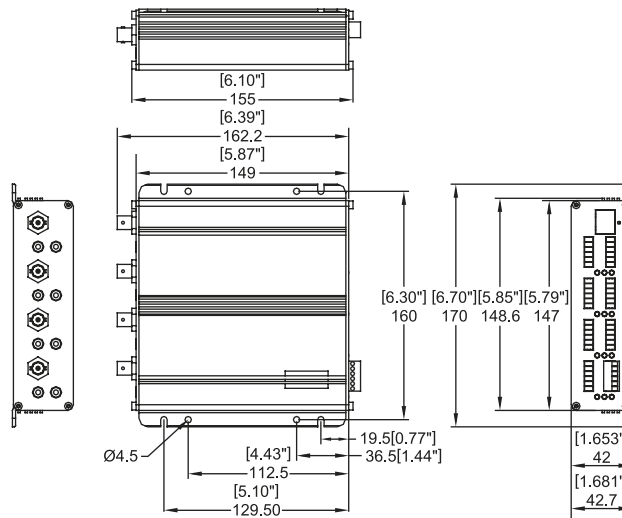


- Selectable MPEG-4 / MJPEG compression
- CIF up to Full D1 resolution at 30/25 FPS
- Multi-stream with variable frame rate in the same compression
- Two way audio supported (per channel)
- Hardware motion detection, Digital Input / Output (per channel)
- Serial ports for each channel



- |                  |                        |                 |                                    |
|------------------|------------------------|-----------------|------------------------------------|
| ① Channel Number | ③ Audio Input / Output | ④ Ethernet Port | ⑧ RS-485 LED                       |
| ② Video Input    |                        | ⑤ Reset Button  | ⑨ Digital Input / Output           |
|                  |                        | ⑥ Power LED     | ⑩ Serial Port & DC 12V Power Input |
|                  |                        | ⑦ LAN LED       |                                    |

## DIMENSION DIAGRAM



Unit: mm [inch]

**PRODUCT SPECIFICATION****Video Compression**

Compression	MPEG-4 SP, MJPEG selectable
Picture Resolution	Full D1 (720 x 480 in NTSC, 720 x 576 in PAL) VGA (640 x 480 in NTSC, 640 x 480 in PAL) CIF (352 x 240 in NTSC, 352 x 288 in PAL) QCIF (160 x 112 in NTSC, 176 x 144 in PAL) (per channel)
Bit Rate	28K ~ 3M bps (per channel)
Image Frame Rate	30fps at full D1 resolution (NTSC) 25fps at full D1 resolution (PAL) (per channel)
Multi-stream	Up to 2 configurable frame rate/bit rate streams for preview and recording (per channel)

**Video Input**

Composite Input	4, CVBS, 1.0Vp-p with 75Ω loading, BNC Connector
-----------------	---

**Audio Input**

Compression	8 kHz, Mono, PCM
Audio Line Input	4, Unbalanced, 1.4 Vp-p, 1Vrms, 3.5 mm Phone Jack

**Audio Output**

Compression	8 kHz, Mono, PCM
Audio Line Output	4, Unbalanced, 1.4 Vp-p, 1Vrms, 3.5 mm Phone Jack

**Alarm**

Digital Input	2, TTL, terminal block (per channel)
Digital Output	2, TTL, terminal block (per channel)

**Remote Control**

Serial Port	RS-485: half duplex, terminal block RS-422: full duplex, terminal block RS-232**: full duplex, terminal block (per channel)
-------------	--

**External I/O**

Reset Button	Factory default
LED	System status (per channel)

**Network**

Ethernet Port	Ethernet (10/100 Base-T), RJ-45 connector
Protocol	TCP, UDP, IP, HTTP, DHCP, PPPoE, RTP, RTSP, FTP, SMTP, DNS, DDNS, NTP, ICMP, IGMP, ARP

**Software**

Web Browser	Microsoft Internet Explorer 6.0 or above
SDK	ACTi SDK-10000

PTZ Protocol*	Pelco-D, Pelco-P V1 and V2, Dynacolor, Sony VISCA, American Dynamics
---------------	---

Security	Password protection: configured by the administrator
----------	---

**Operating**

Temperature	0 °C ~ 40 °C (32 °F ~ 104 °F)
-------------	-------------------------------

**Power**

Power Requirement	DC 12V ±10%
Power Consumption	16 W

**Physical**

Dimensions (WxHxD)	170 mm x 42.7 mm x 149 mm (6.70" x 1.68" x 5.87")
Weight	820 g (1.80 lb)

**Approvals**

Certificate	CE, FCC
-------------	---------

\* These PTZ protocols are supported in ACTi NVR and Streaming Explorer.  
\*\* Adjust by inside jumper.